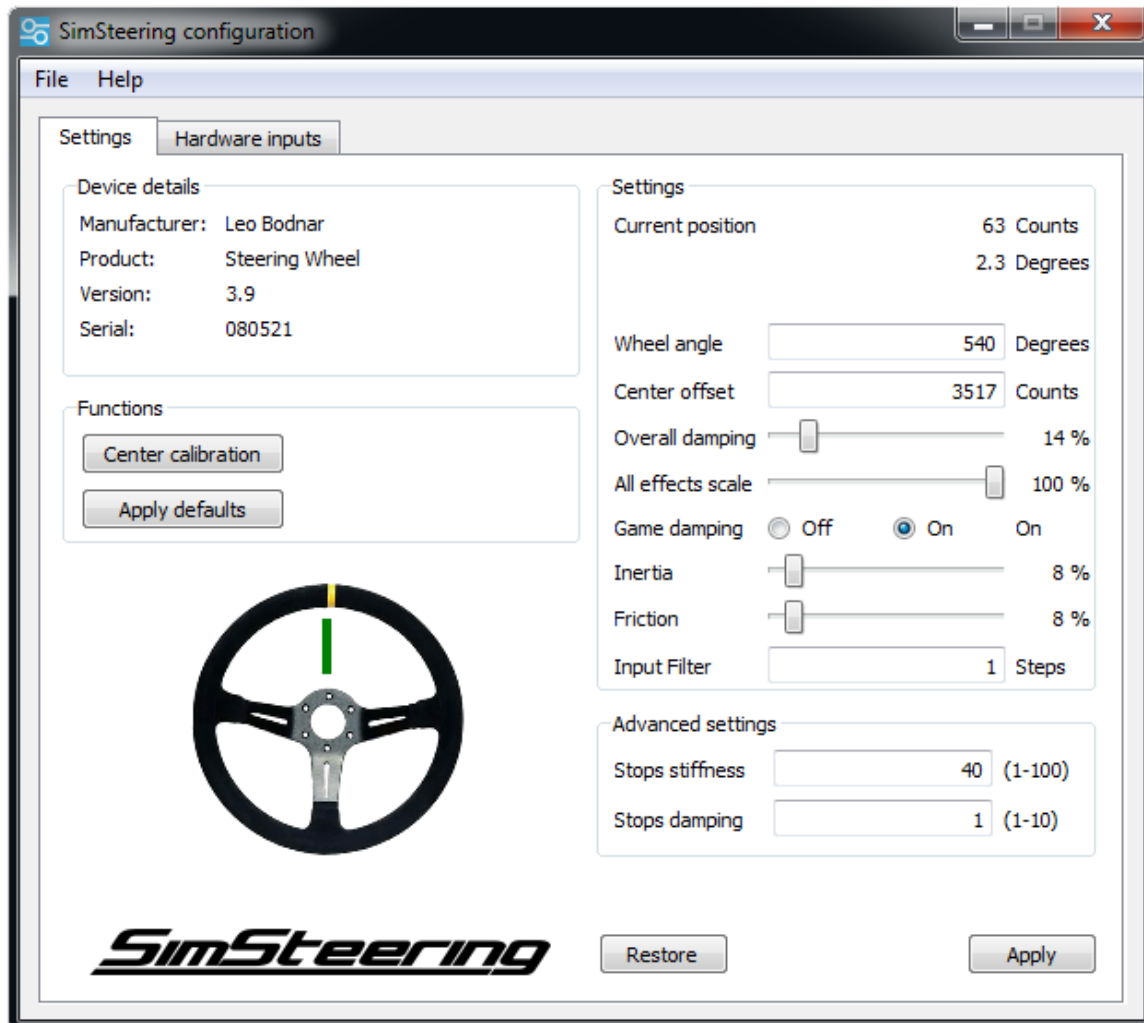


## SimSteering 2 settings for Assetto Corsa.

These are recommended starting settings.



Wheel configuration

Device details

Manufacturer	Leo Bodnar
Product	Steering Wheel
Version	3.9
Serial Number	080521

Current position      63      counts  
                                 2.3      degrees

Centre offset            counts

---

Overall damping     

Overall inertia     

Overall friction     

Stops (each side)            counts

Stops stiffness     

Stops damping     

Centering spring     

---

Motor filter     

Input filter     

---

All Effects scale            %

Damper Effect scale            %

**Back**  
return to options menu

**Start**  
configuration wizard

Input method

wheel / custom

xbox 360 gamepad

keyboard / mouse

Configuration Presets

Default

Fanatec CSR Wheel 900 + CS Pedals

Fanatec Porsche GT3 RS Wheel 900 + CS Pedals

Fanatec\_CSW\_V2\_F1\_Wheel\_no\_shifter

Fanatec\_CSW\_V2\_F1\_Wheel\_shifter

Fanatec\_CSW\_V2\_Porsche918\_shifter2

Fanatec\_CSW\_V2\_XB1\_Wheel\_no\_shifter

Fanatec\_CSW\_V2\_XB1\_Wheel\_shifter?

apply preset

Main Controls
Shifters
Secondary
Advanced

**Force Feedback** invert

Gain

Filter

Minimum Force

Kerb Effects

Road Effects

Slip Effects

Enhanced Understeer Effect

Half FFB Update Rate

**Steering Settings**

Gamma

Filter

Speed Sensitivity

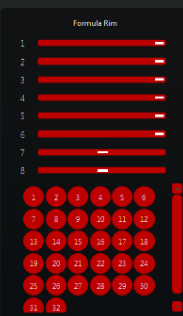
**Pedal Settings**

Brake Gamma

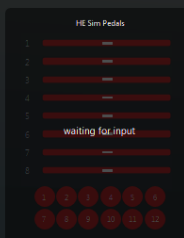
Combine with keyboard input

Detected Controllers


Formula Rim



HE Sim Pedals



Steering Wheel



saved controller configurations

540 deg

enter name for configuration

delete selected

load selected

save current